

## 230V<sub>AC</sub> Infrared Obstruction Light 850nm

CEL-LI-IR850-230-PCFL - LED Aircraft Warning Light

### Key features

- Based on LED technology
- Extremely reliable -long lifetime
- Suitable for off-shore use
- Very low power consumption
- 230V<sub>AC</sub> nominal operating voltage
- Stabilised light output
- Lightweight and small -low wind load factor
- Easy to install, several mounting sets available
- Two cable glands, easy to chain without external terminal boxes
- No RF-radiations
- Five (5) years warranty

### Benefits

- Long maintenance intervals
- Low energy cost
- Supply power voltage variations do not affect to light output
- Very low total lifetime costs
- Low wind load

### Optical characteristics

- Total Radiant Flux 440mW
- Wavelength Infrared 850nm
- Horizontal radiation pattern 360°
- Vertical radiation pattern 15°
- LED supply current stabilised by constant current generator
- Light output degradation less than 30% after 100,000hrs of operation

### Electrical characteristics

- Nominal operating voltage 210-260V<sub>AC</sub>
- Power consumption less than 4W
- Operating Voltage 230V<sub>AC</sub>
- Over-voltage protection

### Mechanical characteristics

- Anodised, marine grade aluminium body and end parts
- AISI 316 acid proof steel screws
- Colourless (clear) glass cover
- Terminal box for 1,5-6mm<sup>2</sup> wires
- Degree of protection IP65
- Operating temperature range -55°C to + 70°C
- Height 210mm, diameter 104mm, weight 1.1 kg
- Wind load with CEL-MS-EV60 mounting kit@ 200km/h less than 40N

### Options

- Mounting kits
- Infrared Light unit only: CEL-LI-IR850-230-F

Order Code: **CEL-LI-IR850-230-PCFL**

Made in EU



**CEL-LI-IR850-230-PCFL**

### Photocell characteristics

- Turn on delay 1 s
- Turn off delay 200 s
- User selectable photocell sensitivity  
OFF/ 200lux | 400lux | 800lux

### Flash controller characteristics

- User selectable flashing rate  
Steady burning /20fpm /40fpm /60fpm
- 250ms flash duration



T: +44 (0)20 8540 1034  
F: +44 (0)20 8543 3058  
E: info@contarnex.com

Contarnex Europe Limited  
252 Martin Way,  
Morden, Surrey SM4 4AW  
United Kingdom



# 230V<sub>AC</sub> Infrared Obstruction Light 850nm

## CEL-LI-IR850-230-PCFL - LED Aircraft Warning Light

### ELECTRICAL INSTALLATION INSTRUCTIONS

**CEL-LI-IR850-230-PCFL has two cable glands for easy chaining without external distribution boxes**

CEL-LI-IR850-230-PCFL is an obstacle light utilising LED technology.

The cabling and installation principles are similar to those of conventional obstacle lights.

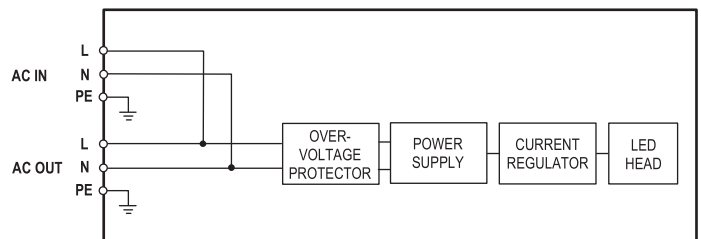
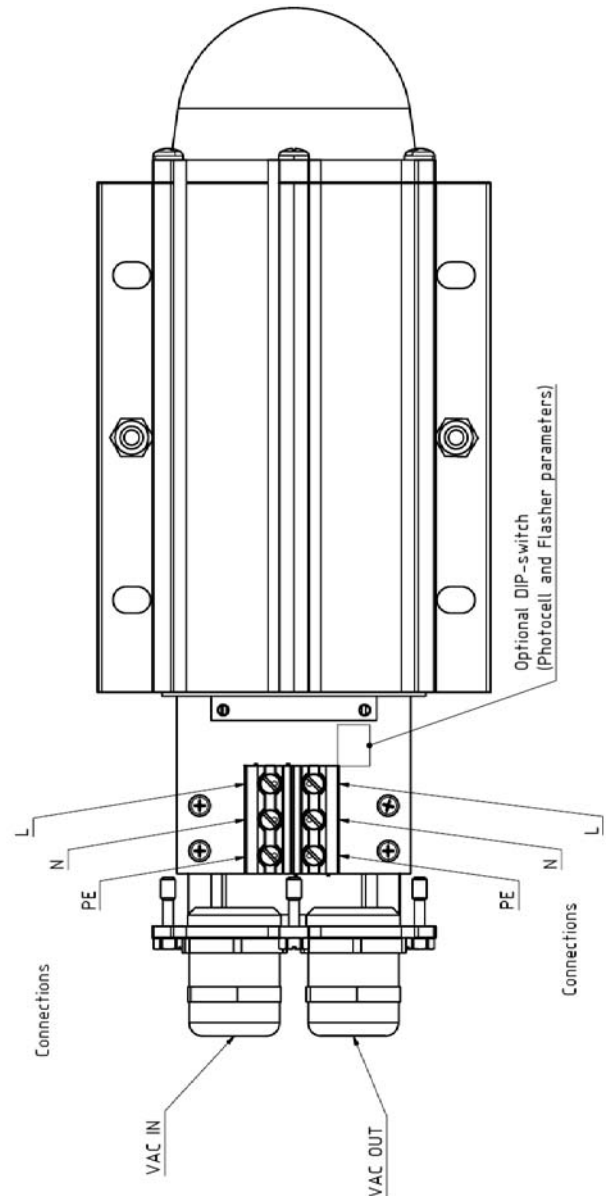
Connection can be protected with a 6A or 10A fuse or with a circuit breaker (C curve).

### Installation specifications

- Cable gland: M25
- Cable diameter: 11 to 17mm
- Wire diameter: max. 6mm<sup>2</sup>
- Recommended cable: 3x1.5mm<sup>2</sup> or 3x2.5mm<sup>2</sup>

### Options

- **CGS-20:** Smaller cable glands  
Set include 2 pcs M20 cable glands with M25-M20 adapters for 7-13mm cables

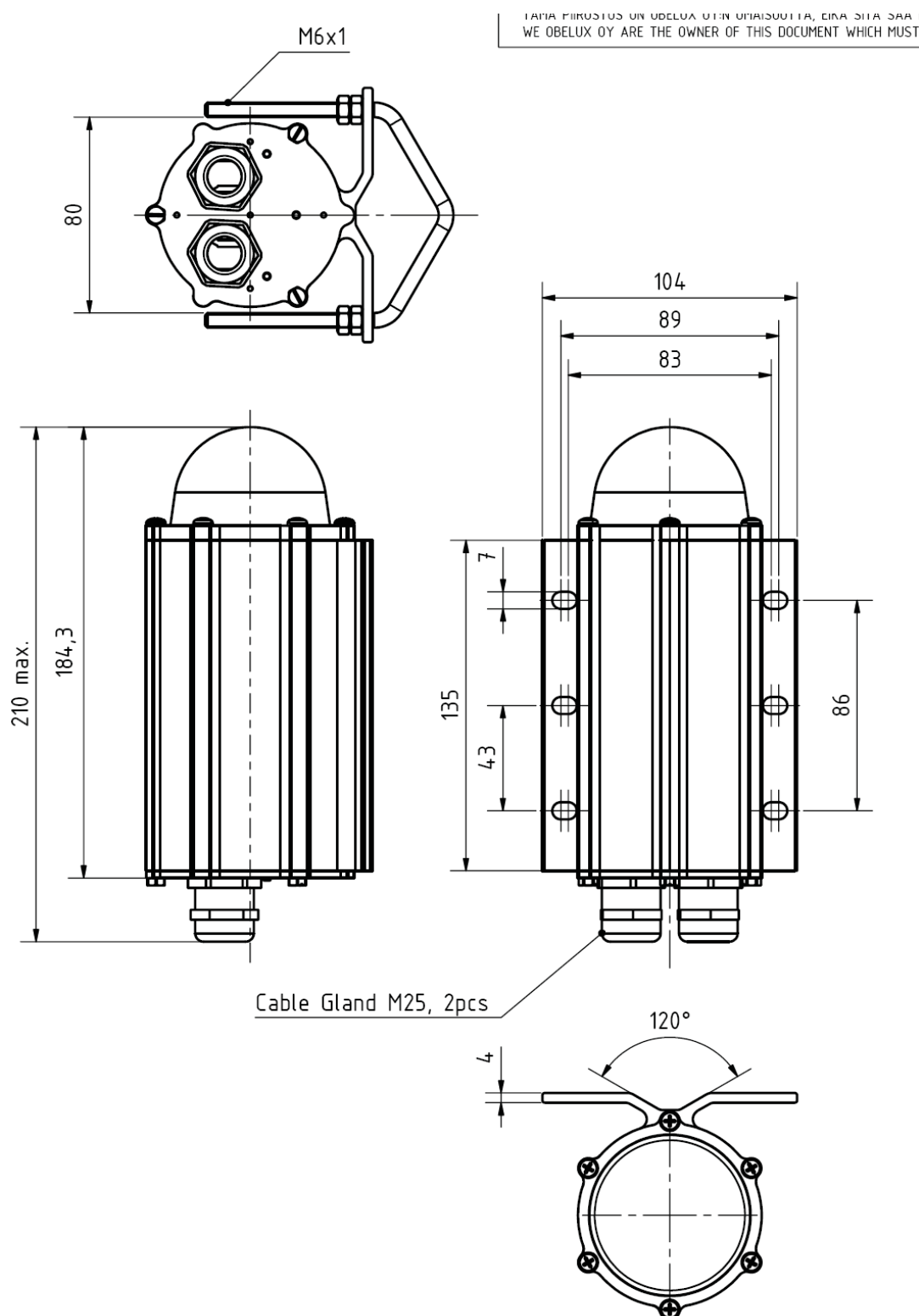


CEL-LI-IR850-230-F block diagram

# 230V<sub>AC</sub> Infrared Obstruction Light 850nm

## CEL-LI-IR850-230-PCFL - LED Aircraft Warning Light

### Mechanical Dimensions



# 230V<sub>AC</sub> Infrared Obstruction Light 850nm

## CEL-LI-IR850-230-PCFL - LED Aircraft Warning Light

There are several types of mounting sets available as option:

### CEL-MS-HV80

Mounting set for 33-80mm vertical or horizontal pipe

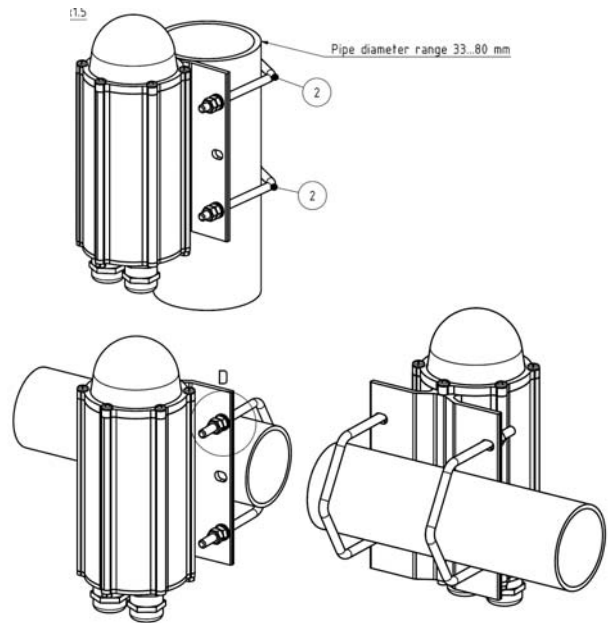
Mounting set include:

- 2 pcs M6 U-bolt
- 8 pcs M6 hex nut
- 4 pcs 6/12 mm washer

All parts AISI 316 acid proof steel

More detailed mechanical data: CEL-MS-HV80 datasheet

Order Code: **CEL-MS-HV80**



### CEL-MS-EV60

Mounting set with extension plate for 30-60mm vertical pipe installation

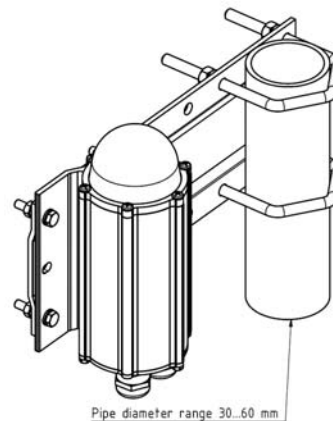
Mounting set include:

- 2 pcs M8 U-bolt, 8 pcs M8 hex nut
- 4 pcs M6x30 bolt, 8 pcs M6 hex nut, 4 pcs 6/12 washer
- 1 pcs extension plate

Extension plate marine grade anodised aluminium, other parts AISI316 acid proof steel

More detailed mechanical data: CEL-MS-EV60 datasheet

Order Code: **CEL-MS-EV60**



### CEL-MS-EV100:

Mounting set with extension plate for 60-100mm vertical pipe installation

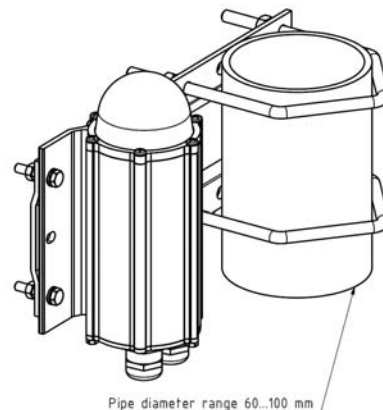
Mounting set include:

- 2 pcs M8 U-bolt, 8 pcs M8 hex nut
- 4 pcs M6x30 bolt, 8 pcs M6 hex nut, 4 pcs 6/12 washer
- 1 pcs extension plate

Extension plate marine grade anodized aluminium, other parts AISI 316 acid proof steel

More detailed mechanical data: CEL-MS-EV100 datasheet

Order Code: **CEL-MS-EV100**



# 230V<sub>AC</sub> Infrared Obstruction Light 850nm

## CEL-LI-IR850-230-PCFL - LED Aircraft Warning Light

### CEL-MS-EV150:

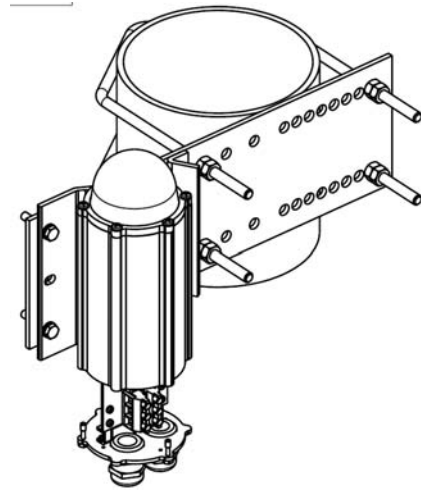
Mounting set with extension plate  
for 100-150mm vertical pipe installation

Mounting set include:

- 2 pcs M8 U-bolt, 8 pcs M8 hex nut
- 4 pcs M6x30 bolt, 8 pcs M6 hex nut, 4 pcs 6/12 washer
- 1 pcs extension plate

Extension plate hot dipped galvanised steel,  
other parts AISI 316 acid proof steel  
More detailed mechanical data: CEL-MS-EV150 datasheet

Order Code: **CEL-MS-EV150**



### CEL-MS-DV60:

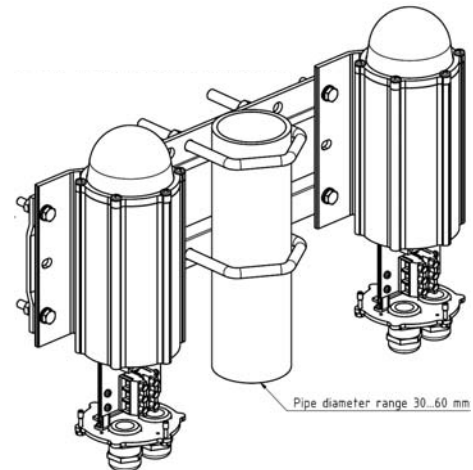
Double mounting set with extension plate  
for 30-60mm vertical pipe installation

Mounting set include:

- 2 pcs M8 U-bolt, 8 pcs M8 hex nut
- 8 pcs M6x30 bolt, 16 pcs M6 hex nut, 8 pcs 6/12 washer
- 1 pcs extension plate

Extension plate marine grade anodised aluminium,  
other parts AISI 316 acid proof steel  
More detailed mechanical data: CEL-MS-DV60 datasheet

Order Code: **CEL-MS-DV60**



### CEL-MS-DV100:

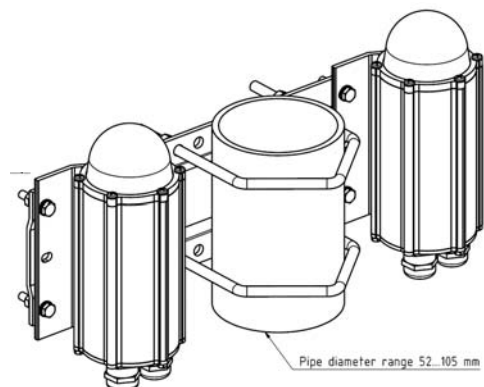
Double mounting set with extension plate  
for 60-100mm vertical pipe installation

Mounting set include:

- 2 pcs M8 U-bolt, 8 pcs M8 hex nut
- 8 pcs M6x30 bolt, 16 pcs M6 hex nut, 8 pcs 6/12 washer
- 1 pcs extension plate

Extension plate marine grade anodised aluminium,  
other parts AISI 316 acid proof steel  
More detailed mechanical data: CEL-MS-DV100 datasheet

Order Code: **CEL-MS-DV100**



# 230V<sub>AC</sub> Infrared Obstruction Light 850nm

## CEL-LI-IR850-230-PCFL - LED Aircraft Warning Light

### CEL-MS-RW

Mounting set for horizontal plate or wall installation

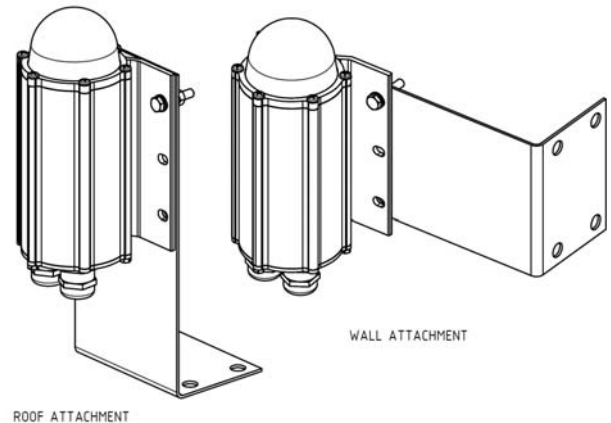
Mounting set include:

- 4 pcs M6x30 bolt, 8 pcs M6 hex nut, 4 pcs 6/12 washer
- 1 pcs L-shape 2mm plate

All parts AISI 316 acid proof steel

More detailed mechanical data: CEL-MS-RW datasheet

Order Code: **CEL-MS-RW**



### CEL-MS-LV U

Mounting set for L and V -shape profiles

Mounting set include

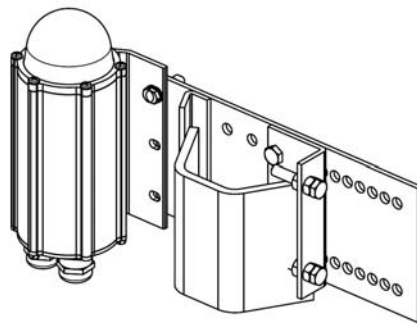
- 1 set accessories for light unit fitting to plate
- 1 pcs extension plate with adjusting plate and accessories

Extension plate hot dip galvanised steel, other parts AISI 316 acid proof steel

More detailed mechanical data: CEL-MS-LVU datasheet

Order Code: **CEL-MS-LVU** (with galvanized extension plate)

**CEL-MS-LVA** (with AISI 316 extension plate)



### CEL-MS-N18

Mounting set for 1" NPT at bottom

More detailed mechanical dimensions: CEL-MS-N1B dataheet

Order Code: **CEL-MS-N1B**

