



CAA - CAP168 - 200cd Low Intensity Group B - Obstacle Light CEL-LI-200-2448-PCFL

Key Features

- Based on LED-technology
- Extremely reliable long lifetime
- Suitable for off-shore use
- Very low power consumption
- Wide 22V to 60VDC input voltage
- Stabilised light output
- Lightweight and small low wind load factor
- Easy to install, several mounting sets available
- Two cable glands, easy to chain without terminal boxes
- No RF-radiations
- Five (5) years warranty
- Patented

Benefits

- Long maintenance intervals
- Low energy cost
- Supply power voltage variations do not affect to light output
- Very low total lifetime costs
- Low wind load

Specifications met

- Low intensity Group B - CAP168, Civil Aviation Authority, London, February 2001, Flight obstacle (low intensity)

Optical characteristics

- Intensity better than 200cd
- Colour aviation red
- Horizontal radiation pattern 360°
- Vertical radiation pattern 200cd+ 5° to +8°, 50cd 0° to +15°
- LED supply current stabilised by constant current generator
- 10yr continuous operating time

Electrical characteristics

- Input voltage range 22 to 60V_{DC}
- Power consumption less than 12W
- Current consumption when light is OFF: 2mA
- Over voltage protection

Mechanical characteristics

- Anodised marine grade aluminium body and end parts
- AISI 316 acid proof steel screws
- Colourless (clear) glass cover
- Terminal box for 1.5-6 mm² wires
- Degree of protection IP65
- Operating temperature range -55°C to +55°C
- Height 210mm, diameter 104mm, weight 1.3kg
- Wind load with CEL-MS-EV60 mounting kit@ 200km/h less than 40 N

Options

- Mounting kits
- Without Photocell & Flasher: CEL-LI-200-2448-F

Order Code: **CEL-LI-200-2448-PCFL**



CEL-LI-200-2448-PCFL

Photocell characteristics

- Turn on delay 1 s
- Turn off delay 200 s
- User selectable photocell sensitivity
OFF/ 200lux | 400lux | 800lux

Flash controller characteristics

- User selectable flashing rate
Steady burning /20fpm /40fpm /60fpm
- 250ms flash duration Photocell characteristics



T: +44 (0)20 8540 1034
F: +44 (0)20 8543 3058
E: info@contarnex.com

Contarnex Europe Limited
252 Martin Way,
Morden, Surrey SM4 4AW
United Kingdom



CAA - CAP168 - 200cd Low Intensity Group B - Obstacle Light CEL-LI-200-2448-PCFL

ELECTRICAL INSTALLATION INSTRUCTIONS

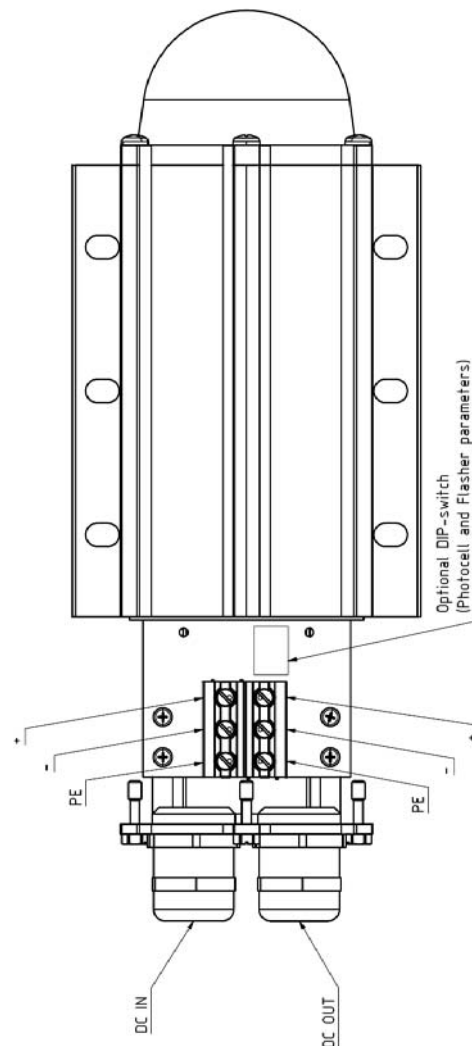
CEL-LI-200-2448-F have two cable glands for easy chaining without external distribution boxes

CEL-LI-200-2448-F is an obstacle light utilising LED technology. The cabling and installation principles are similar to those of conventional obstacle lights.

Connection can be protected with a 6 A or 10 A fuse or with a circuit breaker (C curve).

Installation specifications

- Cable gland: M25
- Cable diameter: 11 to 17 mm
- Wire diameter: max. 6 mm²
- Recommended cable: 3x1.5 mm² or 3x2.5 mm²



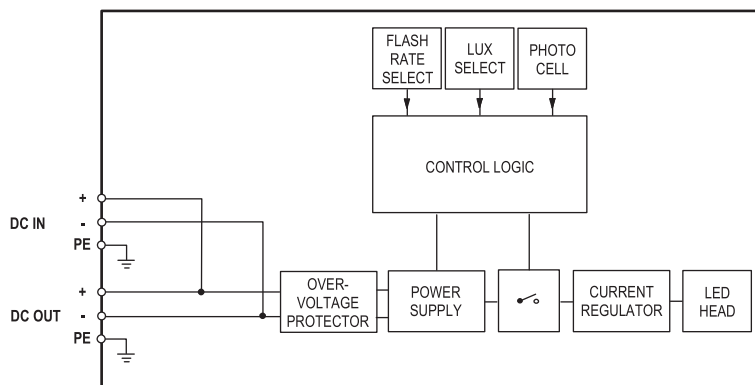
PCFL DIP switches

DIP1	DIP2	PHOTOCELL
OFF	OFF	OFF (light always ON)
ON	OFF	200 lux
OFF	ON	400 lux
ON	ON	800 lux

DIP3	DIP4	FLASH RATE - flash duration 250ms
OFF	OFF	STEADY BURNING
ON	OFF	20 fpm
OFF	ON	40 fpm
ON	ON	60 fpm

	OFF	ON
1.	<input type="checkbox"/>	<input type="checkbox"/>
2.	<input type="checkbox"/>	<input type="checkbox"/>
3.	<input type="checkbox"/>	<input type="checkbox"/>
4.	<input type="checkbox"/>	<input type="checkbox"/>

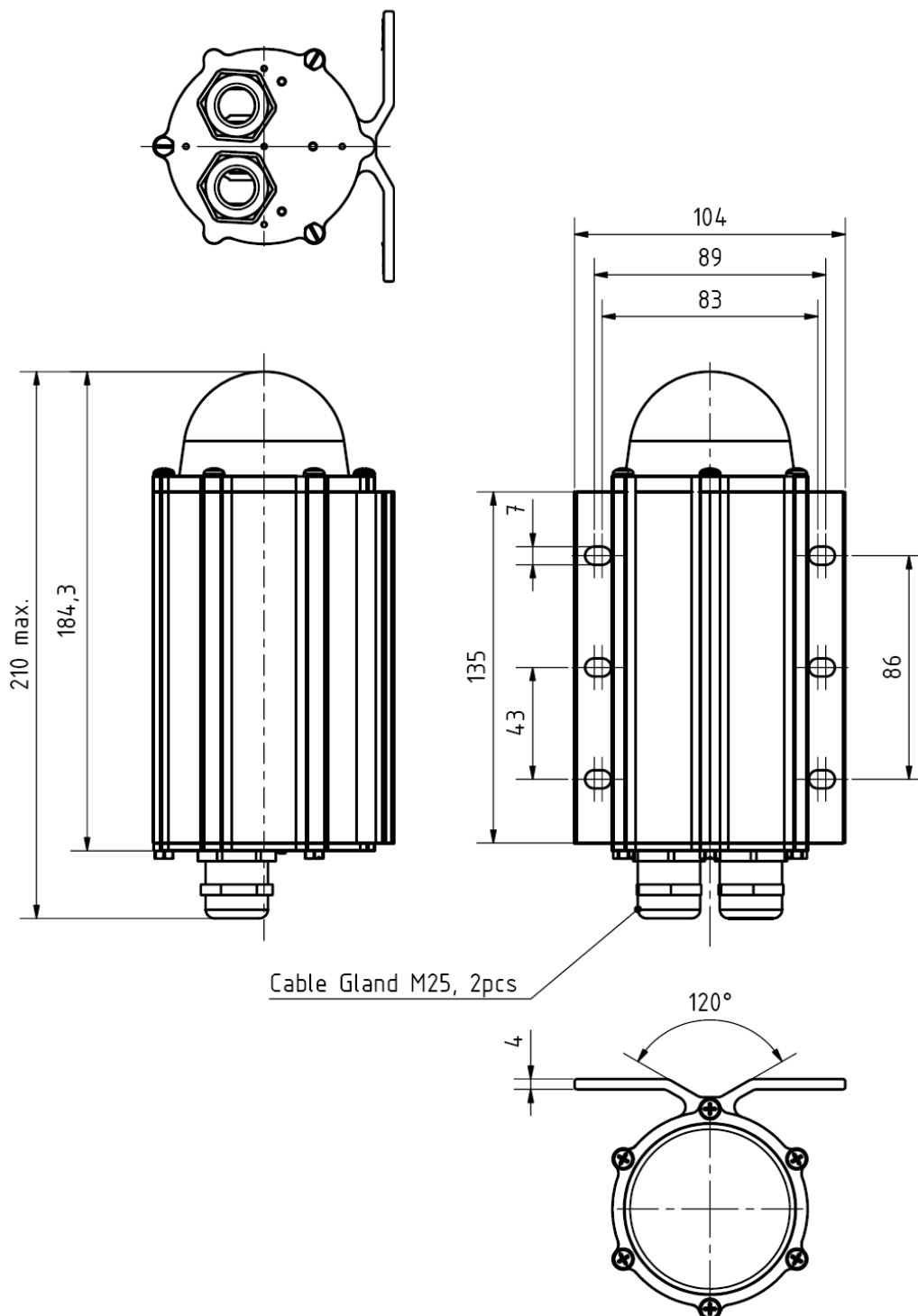
Default DIP settings:
800 lux, steady burning



CEL-LI-200-2448-PCFL block diagram

CAA - CAP168 - 200cd Low Intensity
Group B - Obstacle Light
CEL-LI-200-2448-PCFL

Mechanical dimensions



CAA - CAP168 - 200cd Low Intensity Group B - Obstacle Light CEL-LI-200-2448-PCFL

There are several typcs of mounting sets available as option:

CEL - MS-HV80

Mounting set for 33-80 mm vertical or horizontal pipe

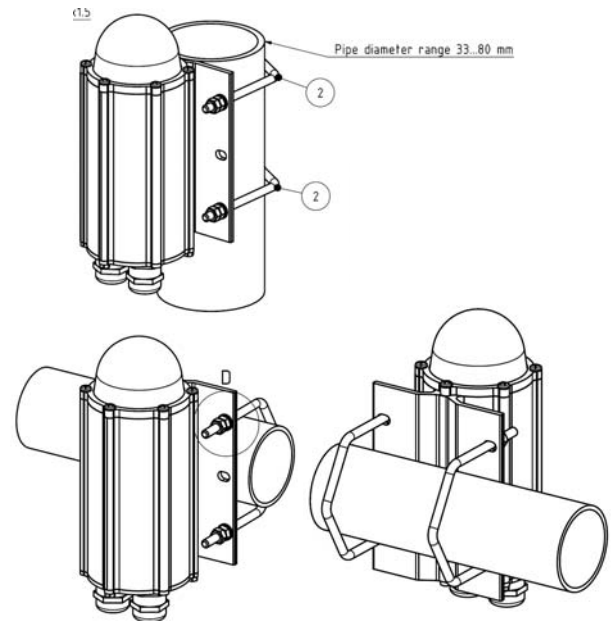
Mounting set includes:

- 2 pcs M6 U-bolt
- 8 pcs M6 hex nut
- 4 pcs 6/12 mm washer

All parts AISI 316 acid proof steel

More detailed mechanical data: CEL - MS-HV80 datasheet

Order Code: **CEL - MS-HV80**



CEL - MS-EV60

Mounting set with extension plate for 30-60 mm vertical pipe installation

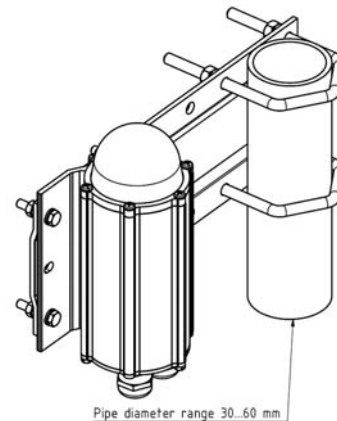
Mounting set includes:

- 2 pcs M8 U-bolt, 8 pcs M8 hex nut
- 4 pcs M6x30 bolt, 8 pcs M6 hex nut, 4 pcs 6/12 washer
- 1 pcs extension plate

Extension plate marine grade anodised aluminium, other parts AISI 316 acid proof steel

More detailed mechanical data: CEL - MS-EV60 datasheet

Order Code: **CEL - MS-EV60**



CEL- MS-EV100:

Mounting set with extension plate for 60-100 mm vertical pipe installation

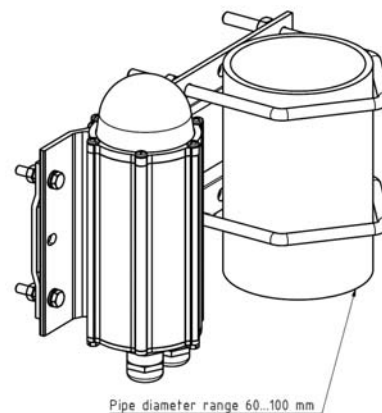
Mounting set includes:

- 2 pcs M8 U-bolt, 8 pcs M8 hex nut
- 4 pcs M6x30 bolt, 8 pcs M6 hex nut, 4 pcs 6/12 washer
- 1 pcs extension plate

Extension plate marine grade anodised aluminium, other parts AISI 316 acid proof steel

More detailed mechanical data: CEL- MS-EV100 datasheet

Order Code: **CEL- MS-EV100**



CAA - CAP168 - 200cd Low Intensity Group B - Obstacle Light CEL-LI-200-2448-PCFL

CEL - MS-EV150:

Mounting set with extension plate for 100-150 mm vertical pipe installation

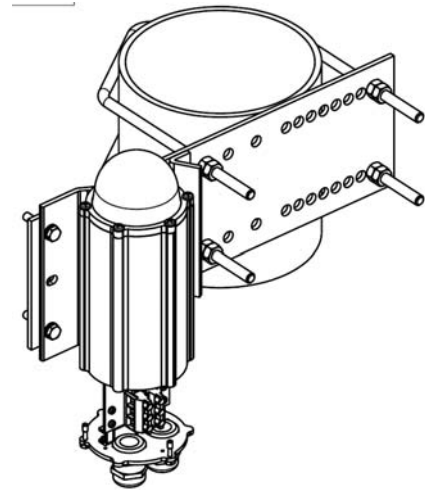
Mounting set includes:

- 2 pcs M8 U-bolt, 8 pcs M8 hex nut
- 4 pcs M6x30 bolt, 8 pcs M6 hex nut, 4 pcs 6/12 washer
- 1 pcs extension plate

Extension plate hot dipped galvanised steel, other parts AISI 316 acid proof steel

More detailed mechanical data: CEL - MS-EV150 datasheet

Order Code: **CEL - MS-EV150**



CEL - MS-DEV60:

Double mounting set with extension plate for 30-60 mm vertical pipe installation

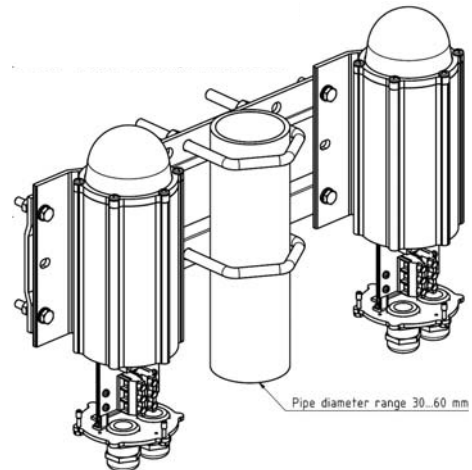
Mounting set includes:

- 2 pcs M8 U-bolt, 8 pcs M8 hex nut
- 8 pcs M6x30 bolt, 16 pcs M6 hex nut, 8 pcs 6/12 washer
- 1 pcs extension plate

Extension marine grade anodised aluminium, other parts AISI 316 acid proof steel

More detailed mechanical data: CEL - MS-DV60 datasheet

Order Code: **CEL - MS-DEV60**



CEL - MS-DEV100:

Double mounting set with extension plate for 60-100 mm vertical pipe installation

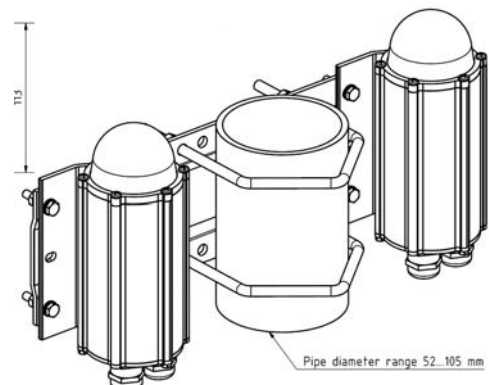
Mounting set includes:

- 2 pcs M8 U-bolt, 8 pcs M8 hex nut
- 8 pcs M6x30 bolt, 16 pcs M6 hex nut, 8 pcs 6/12 washer
- 1 pcs extension plate

Extension marine grade anodised aluminium, other parts AISI 316 acid proof steel

More detailed mechanical data: CEL-MS-DEV100 data sheet

Order Code: **CEL - MS-DEV100**



CAA - CAP168 - 200cd Low Intensity Group B - Obstacle Light CEL-LI-200-2448-PCFL

CEL - MS-RW

Mounting set for horizontal plate or wall installation

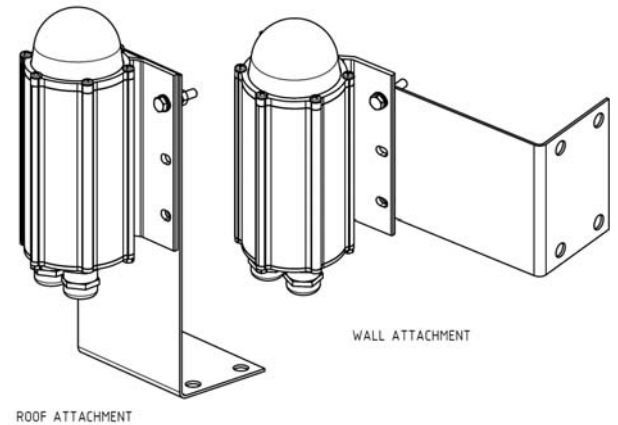
Mounting set includes:

- 4 pcs M6x30 bolt, 8 pcs M6 hex nut, 4 pcs 6/12 washer
- 1 pcs L-shape 2 mm plate

All parts AISI 316 acid proof steel

More detailed mechanical data: CEL - MS-RW datasheet

Order Code: **CEL - MS-RW**



CEL - MS-LVU

Mounting set for L and V -shape profiles

Mounting set includes

- 1 set accessories for light unit fitting to plate
- 1 pcs extension plate with adjusting plate and accessories

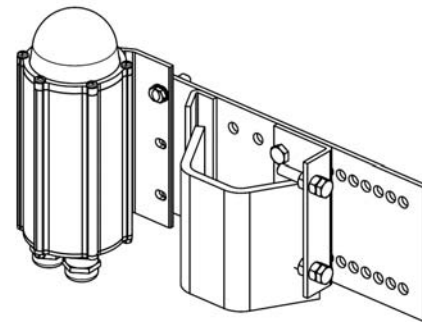
Extension plate hot dip galvanised steel, other parts

AISI 316 acid proof steel

More detailed mechanical data: CEL - MS-LVU datasheet

Order Code: **CEL-MS-LVU** (with galvanized extension plate)

CEL-MS-LVA (with AISI 316 extension plate)



CEL - MS-N1B

Mounting set for 1" NPT at bottom

More detailed mechanical dimensions: CEL- MS-N1 B datasheet

Order Code: **CEL- MS-N1 B**

